

CLASS - V

- 1) The time at which the +ve angle 90° is made by two hands in a clock.
 1) 3'O clock 2) 9'O clock 3) 6'O clock 4) 4Hr.30mins.
- 2) Which digits have the same place value and face value in 9730465 ?
 1) 7, 0 2) 3, 4 3) 0, 4 4) 0, 5
- 3) The present Decimal System of numbers is first introduced by
 1) Greeks 2) Egyptians 3) Indians 4) Romans
- 4) How many three digit numbers can be formed by using the digits 3, 7, 0, 5 if repetitions of the digits is allowed:
 1) 18 2) 27 3) 36 4) 48
- 5) The least number which when rounded of to nearest tens become 80 is
 1) 79 2) 76 3) 74 4) 72
- 6) Seventh set of co -primes from the bigining is ...
 1) 71, 73 2) 59, 61 3) 41, 43 4) 51, 53
- 7) The predecessor of the smallest five digit number is
 1) 10001 2) 9999 3) 999 4) 1001
- 8) Which letter in the following represent Acute angle?
 1) H 2) L 3) V 4) F
- 9) The angle between two hands in a clock at 5'O clock is
 1) Acute angle 2) Obtuse angle 3) Right angle 4) Reflex angle
- 10) What comes next in the series of numbers 1, 1, 2, 3, 5, 8, 13, -
 1) 16 2) 22 3) 21 4) 19
- 11) Cost of TV is Rs. 15,425; cost of Fridge is Rs. 16,650 and cost of washing machine is Rs. 12,250. Ravi had Rs. 30,000 in his pocket. He wanted to use maximum money to purchase any two of the items. How much amount he get back?
 1) Rs. 1150 2) Rs. 1100 3) Rs. 2355 4) Loan Rs. 2075.
- 12) $8P79 - 36Q7 = 489R$, then values of P, Q and R respectively are:
 1) 2, 8, 5 2) 4, 9, 2 3) 4, 8, 2 4) 5, 8, 2

13) If $\square = 10$ and $\Delta = -5$ then which of the following represent 35?

1) $\square \square \square \Delta$

2) $\square \square \Delta \square \square$

3) $\square \square \Delta \Delta \Delta$

4) $\square \Delta \Delta \Delta \Delta \Delta$

14) Ten years back the cost of sunflower oil was Rs. 25 per kg., but today it costs Rs.75 If Sheela purchased 6 kgs of sun flower oil now, how much more money she has to pay than 10 years back?

1) Rs. 300

2) Rs. 350

3) Rs. 250

4) need not pay more

15) If P: $555+125-230 = 450$ and Q: $320-115+245 = 450$ then ...

1) P only is true

2) Q only is true

3) P and Q are true

4) P and Q are False

16) I am a three digit number with 3 in hundreds place, two more than hundreds place is in units place, double the digit in hundred place is in tens place.

Whom am I?

1) 326

2) 356

3) 365

4) 362

17) In 2010 Gopi purchased 200kgs. of rice for Rs.5000. In 2018 rate per Kg. of rice increased by Rs. 15. How many kgs. of rice will come for the same amount?

1) 150

2) 120

3) 160

4) 125

18) 13 times a number is added to itself to get 112. Then the number is

1) 4

2) 9

3) 6

4) 8

19) The smallest possible answer for the problem if there are no 'zeros' in the boxes.

$$4 \begin{array}{|c|c|c|} \hline \square & \square & \square \\ \hline \end{array}$$

$$+ \begin{array}{|c|c|c|} \hline 6 & \square & \square \\ \hline \end{array}$$

$$+ \begin{array}{|c|c|c|} \hline \square & 7 & \square \\ \hline \end{array}$$

1) 4670

2) 4893

3) 4673

4) 467

20) A box contains 9 kg 250 gr. of apples. If 12 such boxes of apples are equally arranged into smaller boxes in which each contains 1 kg. 500gr. of apples. Then the number of smaller boxes required...

1) 72

2) 74

3) 70

4) 64

21) Raju took his family to a circus. The ticket for adult is Rs. 100 and for child is Rs. 75. He spent Rs. 500 for tickets. How many adults and children are there in his family?

- 1) 2 Adults, 4 children
- 2) 4 Adults, 2 children
- 3) 2 Adults, 6 children
- 4) 1 Adult, 6 children

(22-23) observe the figure and answer
22) Total number of students in the school ..

1 Figure=10 Students

- 1) 110
- 2) 1100
- 3) 220
- 4) 1000

23) Number of students more in II and III classes than IV class...

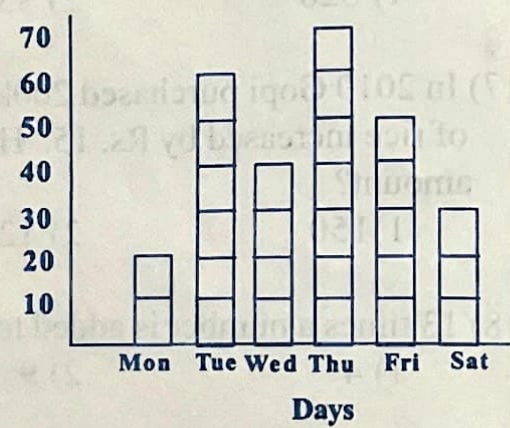
- 1) 4
- 2) 2
- 3) 10
- 4) 20

Class	No. of students in each class
I	2 figures
II	5 figures
III	4 figures
IV	7 figures
V	4 figures

(24-25) observe the figure and answer

24) Sum of the motor cycles sold on Tuesday and wednesday is same as sum of the motor cycles sold on days

- 1) Mon - Thursday
- 2) Thursday - Friday
- 3) Mon - Friday - sat
- 4) Friday-sat.



25) Number of motor cycles sold on (wednesday + Thursday) - (Tuesday + Friday) =

- 1) 0
- 2) 10
- 3) 20
- 4) 30

(26-27) On the Hyderabad - Vijayawada high way a board appeared like this:

Vijayawada - 284 kms, Kodada - 162 kms, Suryapet - 120 kms

26) A car started at Hyderabad reched Kodada for some work then came back to Suryapet; again from there, reached Vijayawada. Then total distance covered (in kms.)

- 1) 284
- 2) 368
- 3) 306
- 4) 326

27) How much distance from Suryapet to Vijayawada is more that of Hyderabad to Suryapet?

- 1) 44 kms
- 2) 164 kms
- 3) 64 kms
- 4) 22 kms

28) $a + p = a$; $b - p = b$; $c \times p = p$ and $p/d = p$ then $p = \dots\dots\dots$

- 1) 1 2) 0 3) 10 4) 20

29) The date of birth of Srinivasa Ramanujan

- 1) 22nd March 2) 22nd December
3) 14th November 4) 14th April

30) Length of a match box is 4cm, breadth 3cm. How many match boxes can be arranged in a box of length 80cm, breadth 60cm. in single layer ...

- 1) 360 2) 400 3) 240 4) 300

31) Sum of two numbers is one fourth of their product. The numbers are ...

- 1) 9, 12 2) 12, 16 3) 16, 14 4) 12, 6

32) Six crore sixty lakhs six thousand sixty, in number form ...

- 1) 6,60,60,060 2) 6,06,06,060 3) 6,60,06,600 4) 6,60,06,060

33) Match the following:

A

- a) Acute angle
b) Obtuse angle
c) Right angle
d) Reflex angle

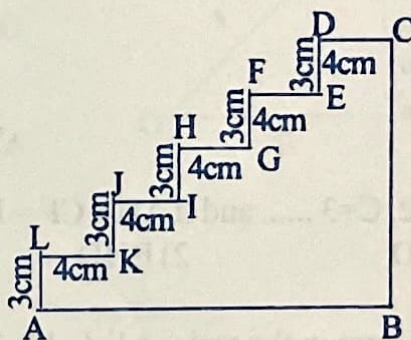
B

- p) 210°
q) 80°
r) 135°
s) 90°

- 1) $a \rightarrow q, b \rightarrow p, c \rightarrow s, d \rightarrow r$ 2) $a \rightarrow q, b \rightarrow r, c \rightarrow s, d \rightarrow p$
3) $a \rightarrow r, b \rightarrow q, c \rightarrow s, d \rightarrow p$ 4) $a \rightarrow q, b \rightarrow r, c \rightarrow p, d \rightarrow s$

34) The perimeter of the adjacent figure is..

- 1) 140cm
2) 35cm
3) 50cm
4) 70 cm



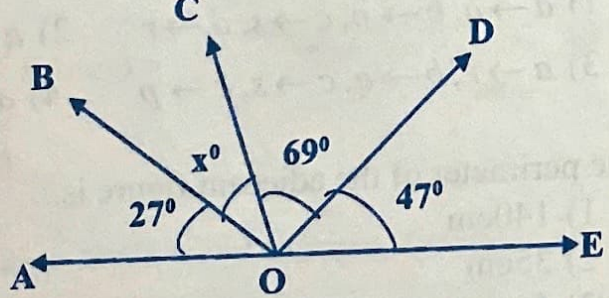
35) Number of dots on the face of a dice opposite to the face having one dot:

- 1) 6 2) 5 3) 4 4) 3

36) A circular paper is folded along a line into two halves. Then the line is called :

- 1) radius 2) diameter 3) chord 4) secant

- 37) For what values of 'x' and 'y' the number $2x4y8$ is the smallest number:
 1) (2, 0) 2) (0, 2) 3) (1, 0) 4) (0, 1)
- 38) If $BAT \rightarrow YZG$ and $POT \rightarrow KLG$ then $RULE \rightarrow \dots\dots$
 1) JGPW 2) HENU 3) GJOU 4) IFOV
- 39) Tangram puzzle belongs to :
 1) India 2) Japan 3) China 4) Srilanka
- 40) If $BOX - PEN = CAB$; $BOOK - BAG = MAS$ then $FOX - PIG = \dots\dots$
 1) CEE 2) CEC 3) BACK 4) ICE
- 41) If $P \times 750 = 13,500$ and $Q \times 970 = 11,640$ then $(P+Q) - (P-Q) = \dots\dots$
 1) 36 2) 24 3) 12 4) 6
- 42) Which letter comes next in the series: B D G K
 1) O 2) Q 3) P 4) R
- 43) Units digit in the sum of $6^{2018} + 5^{2018} + 9^{2018}$ is
 1) 0 2) 1 3) 4 4) 2
- 44) $143 \times 7 \times 2 = 2002 \rightarrow 143 \times 7 \times 15 = \dots\dots\dots$
 1) 150015 2) 15015 3) 1515 4) 1500015
- 45) In the adjacent figure $x =$
 1) 35°
 2) 34°
 3) 36°
 4) 37°



- 46) $A=1, B=2, C=3 \dots\dots$ and if $AH \times CF = FDH$; $AC \times BE = CBE$ then $BA \times AD = \dots\dots$
 1) BID 2) BHD 3) BGD 4) BJD
- 47) Seventh term in the series : 1, 6, 15, 28,
 1) 66 2) 91 3) 85 4) 120
- 48) A square of side 10cm. is cut into two equal rectangles. Perimeter of the square is P. Perimeter of rectangle is Q. Then which is true?
 1) $2Q - P = 20$ 2) $Q - P = 10$ 3) $P - 2Q = 10$ 4) $2Q - P = 10$

- 49) Perimeter of a square is equal to perimeter of a rectangle. The side of the square is 8cm. Then possible length and breadth of the rectangle are:
 1) (13, 3) 2) (5, 10) 3) (12, 4) 4) both 1 and 3

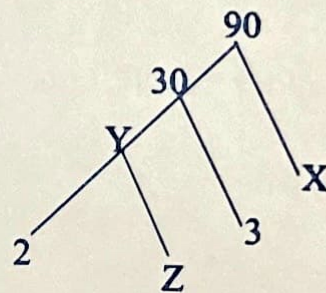
- 50) A boy stand in the ground facing North. Drill teacher gave cautions " Right Turn", then "Right about turn" and finally " Left Turn". The positive angle between original position and present position:
 1) 180° 2) 90° 3) 270° 4) 0°

- 51) The angle between two opposite walls in a room:
 1) 90° 2) 180° 3) 0° 4) can not say

Observe the factors tree of 90

- 52) The missing numbers x, y and z are respectively:

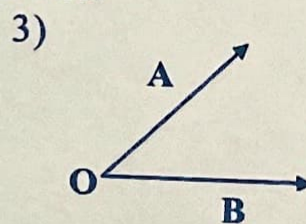
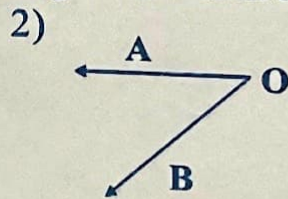
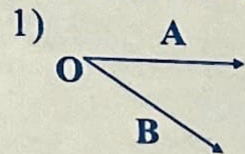
- 1) 3, 10, 5
 2) 3, 5, 10
 3) 10, 3, 5
 4) 10, 5, 3



- 53) A Robo stood on a number line at 'o', took 5 steps towards right, then took 10 steps towards left, then again taken three steps towards right then at which number is that Robo:

- 1) 2 2) -2 3) -8 4) -3

- 54) Which of the following angle AOB is in clockwise:



4) None

55) $\frac{1}{2 \times 3} + \frac{1}{3 \times 4} + \frac{1}{4 \times 5} + \dots + \frac{1}{9 \times 10} = \dots$

- 1) $\frac{2}{3}$ 2) $\frac{2}{5}$ 3) $\frac{3}{4}$ 4) $\frac{3}{5}$

- 56) To indicate a number 12, Ravi used $\text{||||} \text{||||} \text{||}$ and Rani used $\text{|||||} \text{||||} \text{||}$ whose representation is correct?

- 1) Ravi 2) Rani 3) Both are correct 4) Both are false

- 57) A, B, C and D are four persons on a straight road. C is left to B, A is left to C and D is right to B. Then the order of the persons is ..
 1) A, C, B, D 2) A, B, C, D 3) B, D, C, A 4) D, C, A, B
- 58) There are 220 roses in a garden. If one rose out of every 13 roses is spoiled, then the total number of spoiled roses is :
 1) 17 2) 16 3) 18 4) 15
- 59) In a square sheet a square of area 144 sq. cm is drawn. Then all possible rectangles of the same area are drawn on similar square sheets. Number of such Rectangles is:
 1) 7 2) 8 3) 6 4) 9
- 60) M is older than R, Q is younger than R and N, N is not as old as M. Who is the eldest?
 1) M 2) R 3) M or R 4) Q

